

clinell™

Sporicidal Wipes

**STAY A
STEP
AHEAD**
of winter infections

Clinell Sporidical Wipes are peracetic acid generating wipes, activated by water. Use when *Clostridioides difficile* is proven or suspected.

For use on shared patient equipment and hard surfaces. Please ensure that you follow the manufacturer's guidelines. Do not flush.

If unsure please contact the Infection Prevention and Control Manager.

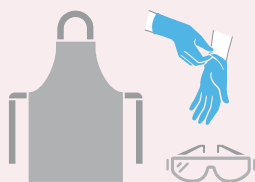


Clinell Sporidical Wipes:
(Pack of 25 - CS25AUS)

Medical surfaces and equipment

- Commodes
- Toilet facilities
- Raised toilet seats
- Door handles
- Mattresses
- Bed frames
- Bed rails
- Bedside surfaces
- Patient equipment

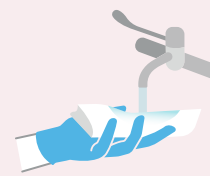
Instructions for use



Wash or decontaminate your hands and put on PPE (risk assessment to ensure appropriate PPE is worn, as per local protocol).



Remove one wipe from the pack.



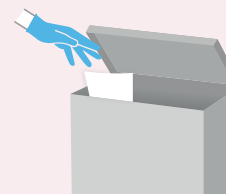
To activate, wet the wipe with water under a tap or dip into a bucket.



Squeeze out the wipe to remove excess water.



Working from top to bottom, clean to dirty, wipe in an 'S' shaped pattern.



If the wipe starts to become dry or soiled, dispose of as per local protocol. Let the surface air dry to maximise contact time.