

A close-up photograph of a hand holding a white, textured wipe against a person's leg. The person is lying down, wearing white clothing. The background is softly blurred, showing more of the person's legs and the white fabric.

carell[®]
professional care

BEDBATH RANGE

Rinse-free, cleansing and moisturising
wipes and shampoo cap for a full body
bathing solution.

carell®

BEDBATH RANGE

In 88 US hospitals 62.2% of bath basins were contaminated with commonly encountered hospital-acquired pathogens¹.

SAFE SOLUTION

The Carell Bedbath range removes the risk of microorganism transmission associated with wash bowl contamination. This reduces the associated risk of lifting and carrying heavy bowls of water and the risk of spills and potential falls¹⁻³. Improved patient cleanliness reduces the number of microorganisms present to transfer to healthcare workers, visitors and the environment.

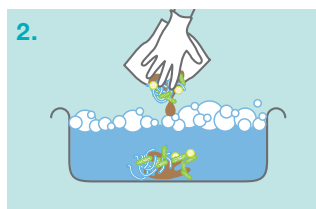
QUICK AND EASY TO USE

Wipes replace the need for traditional cumbersome patient cleansing methods which include preparing bowls, washcloths, soap, lotions and water. They require no towel drying which decreases waste, increases staff compliance and saves money.

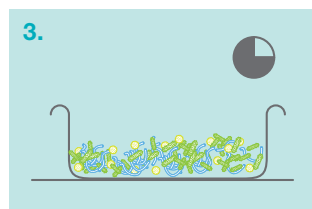
PRODUCT	UNIT OF ISSUE	CODE
Shampoo Cap	Single Unit	PRSHMC1
Bedbath Wipes 8	Pack of 8	CBB8



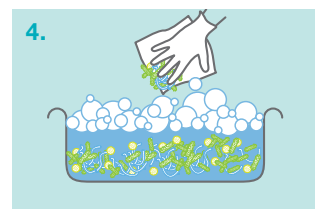
1. Wash basins are heavy and they can create spills which can lead to slips and accidents.



2. When a cloth is dipped back into the basin, organic matter and bacteria is introduced.



3. Microorganisms can be retained within the basin, thriving in wet and warm conditions.



4. When the basin is refilled for the next patient, the microorganisms are present within the water.

REFERENCES

1. Marchaim et al. Hospital bath basins are frequently contaminated with multidrug-resistant human pathogens. Am J Infect Control. 2012 Aug;40(6):562-4. doi: 10.1016/j.ajic.2011.07.014. Epub 2011 Dec 16.
2. Johnson, D. Lineweaver, Maze, L. Patients' Bath Basins as Potential Sources of Infection: A Multicenter Sampling Study. American Association of Critical Care nurses. 2012.
3. Ford, S. Clover, B. Antibiotic resistant bacteria risk from hospital sinks. The Department of Health. 2010.



FULL BODY WASH

Soft wipes designed for use on each area of the body: face, neck, chest, arms, perineum, legs, back and buttocks. Carell's rinse-free Shampoo Cap for hair and scalp completes the range.

A SIMPLE, RINSE-FREE BATHING SOLUTION

Designed for cleaning and moisturising the body in one easy step.

PROMOTES HEALTHY SOFT SKIN

Carell Bedbath Wipes contain Aloe vera and vitamin E for deep moisturising.

A WARM BEDBATH IN SECONDS

Carell Bedbath Wipes can be used at room temperature or placed in a Clinell Warmer for a warm bed bath in seconds.

DERMATOLOGICALLY TESTED

Skin neutral pH of 5.5. Alcohol, lanolin and paraben free.