



clinell[®]

www.clinell.com.au

KILLS 99.999%
OF GERMS
WITHOUT
THE NEED FOR
SOAP & WATER

Antibacterial Hand Wipes

Contains a powerful formula consisting of a mix of unique biocides.

Improved patient cleanliness, specifically the hands, reduces the number of microorganisms available to transfer to healthcare workers and visitors¹. Clinell Antibacterial Hand Wipes are designed to clean and disinfect patient hands. Containing moisturisers and aloe vera, they are ideal for frequent patient use. Based on bactericidal efficacy, Clinell Antibacterial Hand Wipes have been shown to be a suitable alternative to soap and water as an effective approach to supporting patient hand hygiene².

ANTIBACTERIAL HAND WIPES

39% of patients have at least one hospital-associated pathogen on their hands within 48 hours of admission³.

The importance of patient hand hygiene

Hand hygiene is a critical aspect of HAI prevention^{1,4}. Pathogenic organisms are frequently detected on healthcare workers and acute care patients' hands³.

It has been shown that 39% of patients had at least one hospital-associated pathogen on their hands within 48 hours of admission³ and it has been proven that after 7 days in hospital, 62% of all patients tested positive for enterococcal hand contamination¹. Patients are rarely provided with the opportunity to clean their hands⁴.

Clinell Antibacterial Hand Wipes conform with EPIC 3⁵ and Standards 2 and 3 of the NSQHS Standards⁶.

EPIC 3 states that "Patients should be offered the opportunity to clean their hands before meals; after using the toilet, commode or bedpan/urinal; and at other times as appropriate"⁵.

The NSQHS Standards, set out by the Australian Commission on Safety and Quality in Health Care, ensure a high quality health service within Australia⁶.

Standard 2: Partnering with consumers to improve safety and quality of care.

Implementing an antibacterial, accessible and easy to use hand hygiene system enables patients and visitors to partner with healthcare workers to reduce transmission of pathogens, improving the safety and quality of care.

Standard 3: Prevention of HAIs and effective management of infections if they occur.

Clinell Antibacterial Hand Wipes have proven bactericidal action killing 99.999% of bacteria for use on visibly clean or dirty hands.

Our wipes also enable improved hand hygiene of both patients and healthcare workers, helping to prevent colonisation and transmission of pathogenic organisms.

An increased level of patient hygiene can dramatically improve patient experience and reduce the risk of transferring microorganisms to healthcare workers and visitors.

Cleaning and disinfecting hands

Use anytime to rapidly disinfect hands without the need for soap and water. Hands must be cleaned after all patient and healthcare worker interactions, after commode/toilet use and before eating. Rub thoroughly, covering all areas of hands. Discard wipe and continue rubbing until hands are dry. Follow the steps below for at least 30 seconds.



1. Rub hands palm to palm.



2. Rub back of each hand with the palm of other hand with fingers interlaced.



3. Rub palm to palm with fingers interlaced.



4. Rub with backs of fingers to opposing palms with fingers interlocked.



5. Rub each thumb clasped in opposite hand using rotational movement.



6. Rub tips of fingers in opposite palm in a circular motion.



7. Rub each wrist with opposite hand.



8. Discard the wipe in the appropriate waste bin.

Antibacterial wipes for cleaning and disinfecting hands. The powerful formula kills 99.999% of bacteria without the need for soap and water.



Antibacterial hand wipes

CAN BE USED ON SOILED, VISIBLY DIRTY HANDS

The wipes contain a surfactant to clean as well as disinfect, unlike alcohol gel rubs which can only be used on visibly clean hands^{7,8}.

CONFORMS WITH EPIC 3⁵ AND STANDARDS 2 AND 3 OF THE NSQHS STANDARDS⁶

Ideal to disinfect hands before eating and after using the toilet. Perfect for patient food trays.

PROVEN TO BE BACTERICIDAL

A mix of biocides with different mechanisms of action.

Help overcome 'barriers' to hand hygiene⁹

ACCESSIBLE

Hand washing sinks are often inconveniently placed or unavailable. Clinell Antibacterial Hand Wipes can be placed at the point of use, increasing compliance.

FOR CARRYING WITH YOU AT ALL TIMES

Ensures there is always time for hand hygiene. Clinell Antibacterial Hand Wipes are conveniently sized, individual sachets, ideal for carrying with you at all times.

SKIN FRIENDLY FORMULA

Skin irritation and dryness deters people from hand washing. Clinell Antibacterial Hand Wipes contain moisturisers & aloe vera leaving on sore or dry hands.

Effective hand hygiene plays a role in reducing transmission of microbes¹.



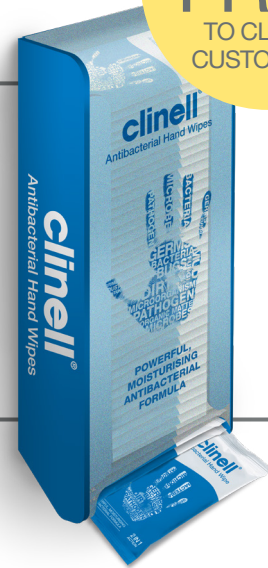
PRODUCT INFORMATION	UNIT OF ISSUE	ORDER CODE
Antibacterial Hand Wipes	Box of 100	CAHW100AUS
Antibacterial Hand Wipe Dispenser	(for CAHW100AUS)	CAHWD

Contact us or a member of our sales team to arrange delivery of your free hand wipe dispensers*.

ANTIBACTERIAL HAND WIPES

DISPENSERS
AVAILABLE
FREE
TO CLINELL
CUSTOMERS*

Clinell's unique wall mounted hand wipe dispenser is hygienic and easily accessible, which increases compliance and effective wipe usage by conveniently providing wipes at the point of use.



ANTIBACTERIAL HAND WIPE DISPENSERS

DELIVER GOOD HAND HYGIENE - AT THE POINT OF USE

Clinell's dispenser system has been proven to increase compliance and provide effective wipe usage by conveniently placing wipes where they are most frequently used.

HYGIENIC PULL SYSTEM

No need to touch the dispenser with dirty hands. Simply pull on the next available individually wrapped sachet.

EASY-CLEAN DISPENSER

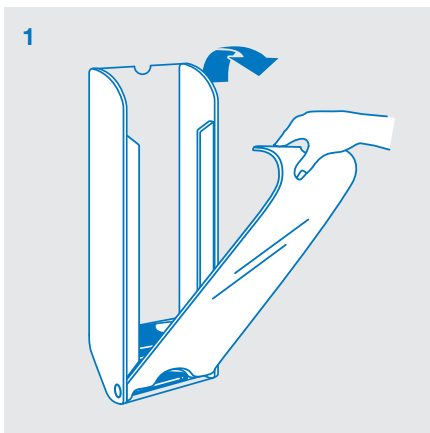
Smooth, easy clean, high density plastic reduces bacteria reservoirs.

QUICK SELF INSTALLATION

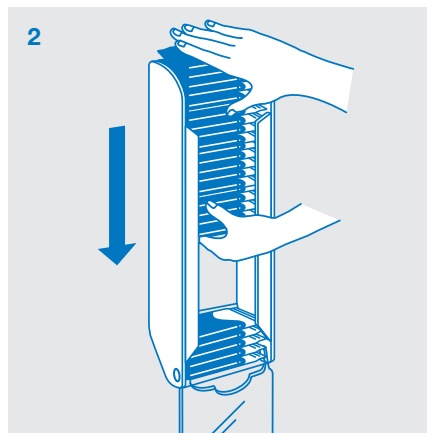
Comes equipped with ready to use, super strong, adhesive tape for quick, easy self installation.

SIMPLE REFILL SYSTEM

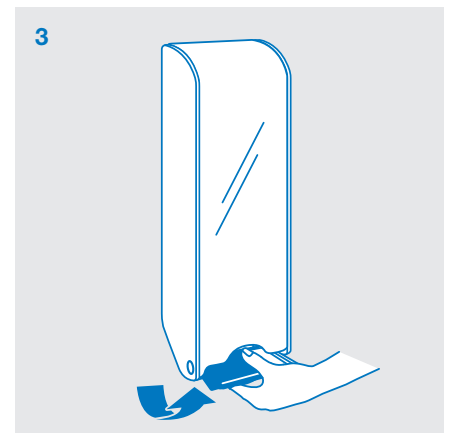
Simple design allows for quick refilling with new wipes.



Easy to load.



Easy to refill.



Easy to dispense.

REFERENCES

- Banfield KR. Hand hygiene and health care associated infections. *Lancet Infect Dis* 2007;7:304.
- MAC Wilkinson, M Kiernan, J Wilson, H Loveday, C Bradley. Assessment of the efficacy of a patient hand wipe; development of a test method. *J Hosp Infect*. 2017 Aug S0195-6701(17)30457-7.
- Istenes et al. Patients' potential role in the transmission of healthcare-associated infections: Prevalence of contamination with bacterial pathogens and patient attitudes toward hand hygiene. *Am J Infect Control*. 2013 Sep;41(9):793-8.
- Burnett E. Perceptions, attitudes, and behaviour towards patient hand hygiene. *Am J Infect Control* 2009;37:638-42.
- Loveday, H. P, et al. epic3: National Evidence-Based Guidelines for Preventing Healthcare-Associated Infections in NHS Hospitals in England. *J. Hosp. Infect*. 2014 86: S1-S70. In: Commonwealth of Australia, editor. 2010.
- Australian Commission on Safety and Quality in Healthcare. *NSQHS Standards*. 2012.
- Kampf G, et al. Efficacy of alcohol-based gels compared with simple hand wash hygienic hand disinfection. *J Hosp Infect*. 2004 Apr;56:2:S13-15.
- Kramer A, et al. Limited Efficacy of alcohol-based hand gels. *The Lancet*. 2002 Apr 27;359(9316):1489-90.
- Hand Hygiene Australia. *HHA Manual 2017. 5 Moments for Hand Hygiene*. June 2017.

* Terms and conditions apply.

GHA190011