

# Bed Bath Range

Rinse-free, cleansing and moisturising gloves, wipes and shampoo cap for a full body bathing solution.



# Clinell Bed Bath Range

**In 88 US hospitals 62.2% of bath basins were contaminated with commonly encountered hospital-acquired pathogens<sup>1</sup>.**

## Safe solution

The Clinell Bed Bath Range removes the risk of microorganism transmission associated with washbowl contamination. This reduces the associated risk of lifting and carrying heavy bowls of water and the risk of spills and potential falls<sup>1-3</sup>. Improved patient cleanliness reduces the number of microorganisms present to transfer to healthcare workers, visitors and the environment.

## Quick and easy to use

Wipes replace the need for traditional cumbersome patient cleansing methods which include preparing bowls, washcloths, soap, lotions and water. They require no towel drying which decreases waste, increases staff compliance and saves money.

## A warm bedbath in seconds

Clinell Bed Bath Wipes and Gloves can be used at room temperature or placed in a Clinell Warmer for a warm bed bath in seconds.

## Full body wash

Soft wipes and gloves designed for use on each area of the body: face, neck, chest, arms, perineum, legs, back and buttocks. The Clinell rinse-free shampoo cap for hair and scalp completes the range.

## A simple, rinse-free bathing solution

Designed for cleaning and moisturising the body in one easy step.

## Promotes healthy soft skin

Clinell Bed Bath Wipes and Gloves contain Aloe vera and vitamin E to moisturise and help hydrate skin.

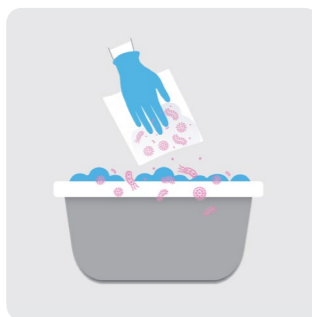
## Dermatologically tested

Skin neutral pH. *Alcohol-, lanolin- and paraben-free.*

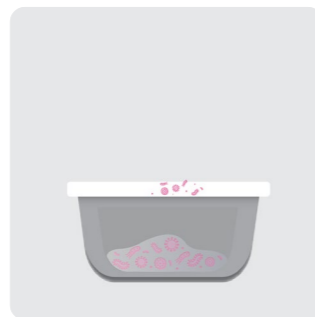
## Microorganism transmission associated with washbowl contamination



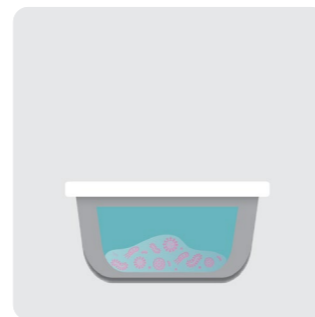
Washbowls are heavy and they can create spills which can lead to slips and accidents.



When a cloth is dipped back into the basin, organic matter and bacteria is introduced.



Microorganisms can be retained within the basin, thriving in wet and warm conditions.



When the basin is refilled for the next patient, the microorganisms are present within the water.

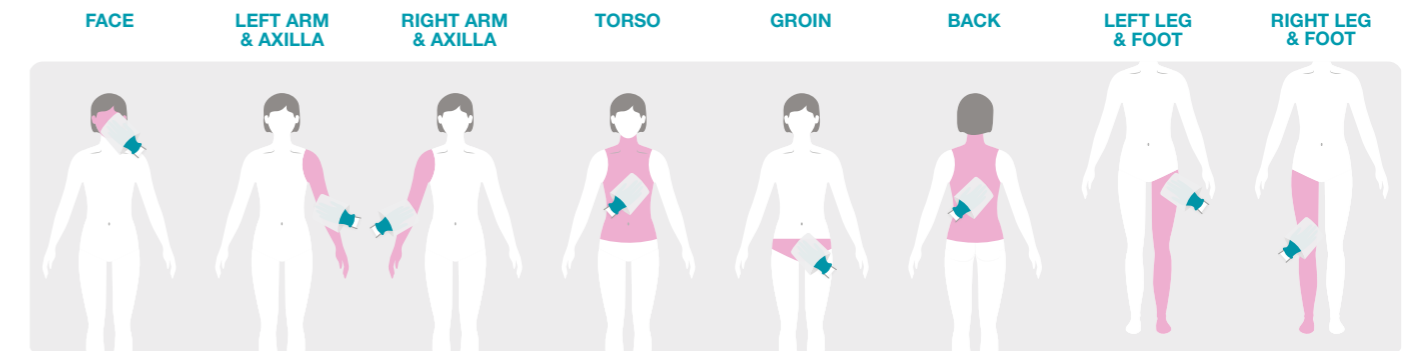
# Directions for use



## Bed Bath Wipes and Gloves

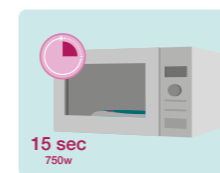
Can be used unwarmed or heated. To heat pack, store in a warmer before use or microwave for 15 seconds\*.

Use one glove/wipe for each of the areas:



## Bed Bath Shampoo Cap

Can be used unwarmed or heated. To heat pack, store in a warmer before use or microwave for 15 seconds\*.



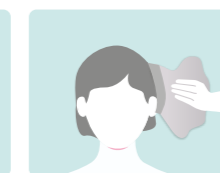
Can be used un-warmed or heated. To heat pack, store in a warmer before use or microwave for 15 seconds.\*



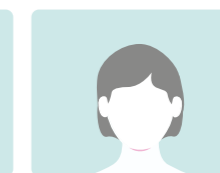
Place shampoo cap over hair ensuring it is all covered.



Massage your head all over for 2-3 minutes to make sure the hair is completely saturated.



To ensure longer hair is properly washed, remove cap and work through the end of the hair.







Remove cap and towel dry, if required.



Dispose of cap in bin.

\*Microwave times may vary depending on power. Test temperature after heating and before use.

	Product	Product code	NHSSC code
	Bed Bath Cloths 60	CBC60	VJT447
	Bed Bath Cloths 8	CBB8	VJT392
	Bed Bath Gloves 8	CBBGL8	MLC339
	Bed Bath Shampoo Cap	PRSHMC1	VJT492

## References:

1. Marchaim, D. et al. Hospital bath basins are frequently contaminated with multidrug-resistant human pathogens. *Am J Infect Control.* 2012 Aug;40(6):562-4. doi: 10.1016/j.ajic.2011.07.014. Epub 2011 Dec 16.
2. Johnson, D. Lineweaver, Maze, L. Patients' Bath Basins as Potential Sources of Infection: A Multicenter Sampling Study. *American Association of Critical Care nurses.* 2012.
3. Ford S. Clover, B. Antibiotic resistant bacteria risk from hospital sinks. The Department of Health. 2010.

Always read the label and product information before use.